



**XTie - Requirements Tracer**  
symbol is a Registered Trademark of  
Teledyne Brown Engineering © 1990-1996 All Rights Reserved

## **XTie-RT**

**Version 3.0 DEMO**

**Installation**

**for**

**Windows 95<sup>®</sup>/NT<sup>®</sup>**

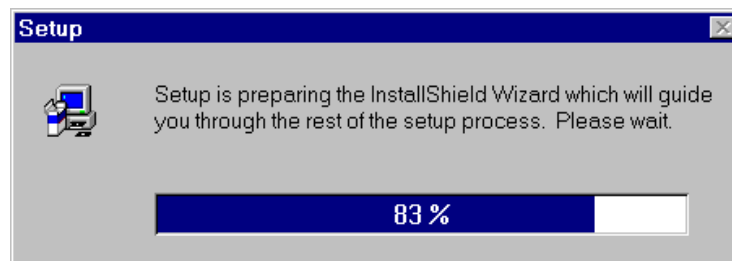
Welcome to the XTie DEMO! Although the installation of XTie is similar to other Windows-based software, these instructions are provided for your convenience.

The proper operation of XTie requires TCP/IP networking except on stand-alone Windows NT . How to install and configure your machine with the TCP/IP networking is well beyond the scope of this document. If you have an Ethernet adapter or have dial-up networking installed, you may already have TCP/IP networking. Appendix C provides the steps necessary for stand-alone Windows 95 systems that have no modem or Ethernet adapter. TCP/IP unavailability will result in XTie DB Server failure to start.

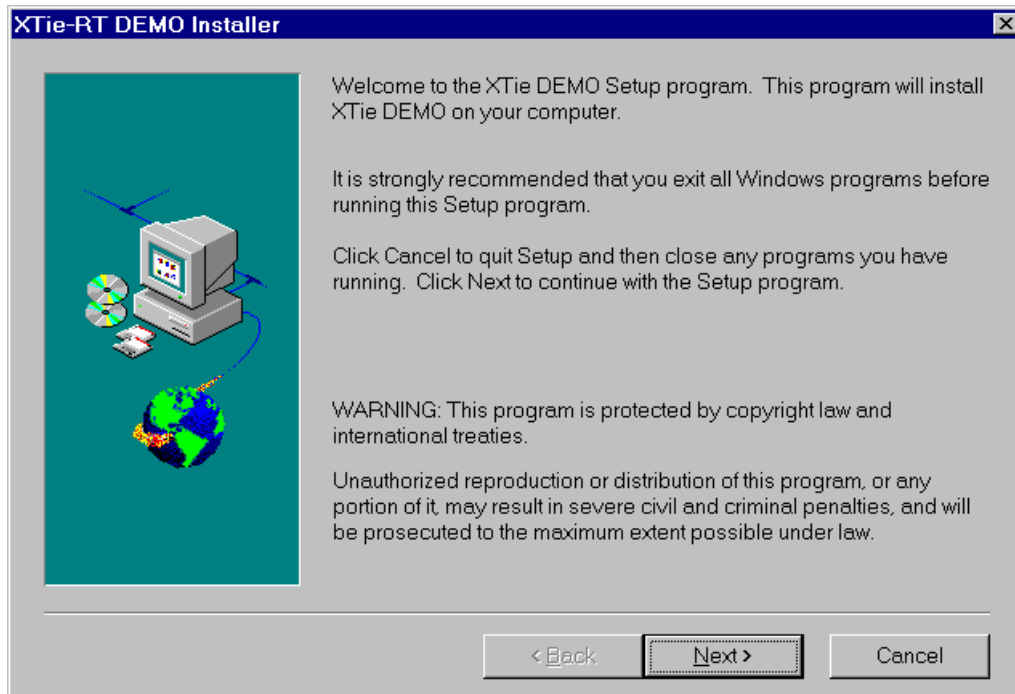
**NOTE:** If you are **reinstalling** XTie, the “sru” (server) process **MUST** be stopped so that the sru.exe file may be replaced. Stopping the server while XTie clients are connected will not make you very popular, so please ensure all users have disconnected from the XTie server prior to stopping it. Prior to installing XTie, uninstall the previous XTie installation..

To install XTie, follow these steps.

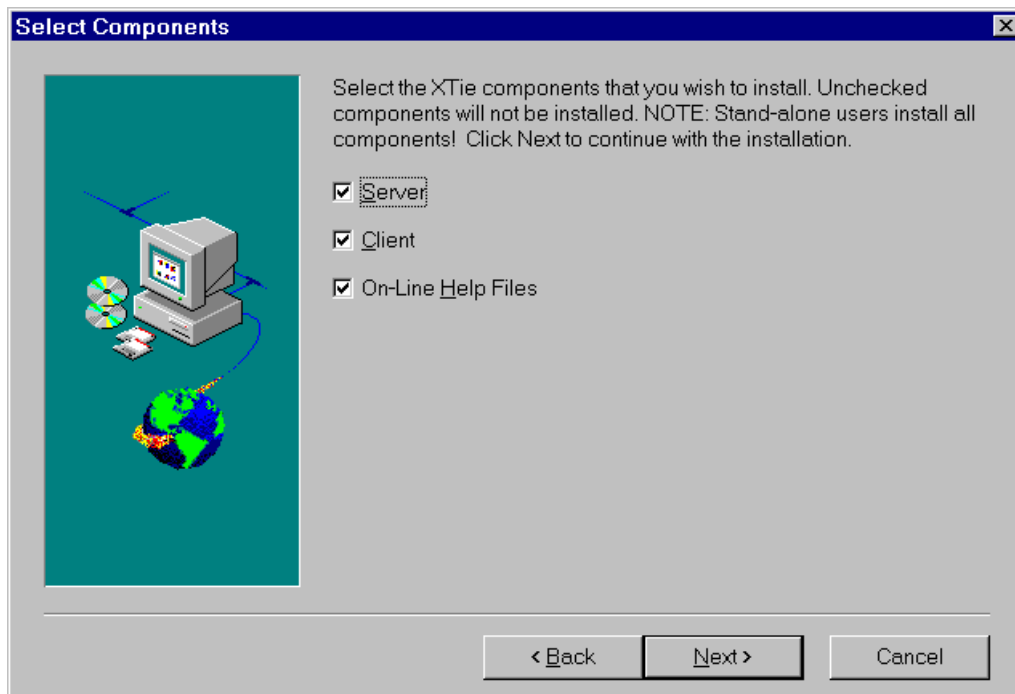
Insert the floppy disk labeled, “XTie DISK 1.” Using the Explorer or File Manager select the floppy disk device. Double click on setup.exe. The following dialog will appear:



After a brief period, the following dialog will appear:

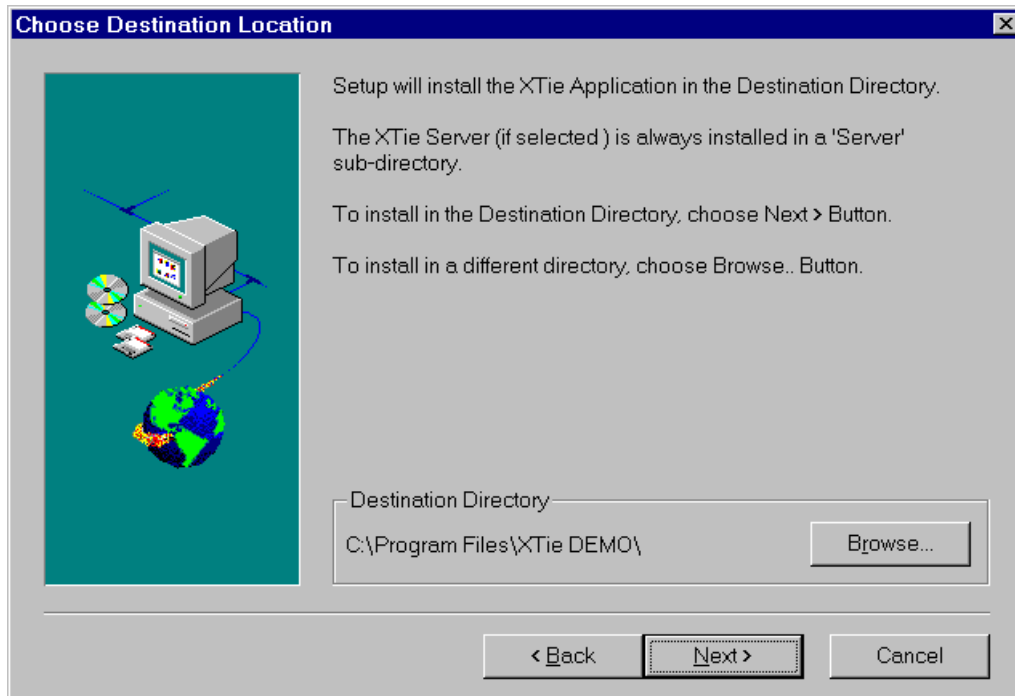


After reading this dialog, select Next to continue. The following dialog will appear:

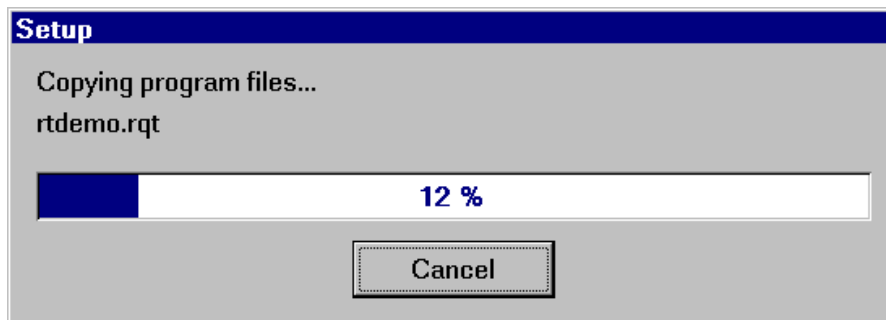


This dialog allows the user to install the XTie server and client. The server need only be installed on one machine. Clients are installed on all machines where XTie will be used. The remainder of the instructions assume a complete installation of both server and client.

Select the server checkbox, then select Next to continue. The following dialog will appear:

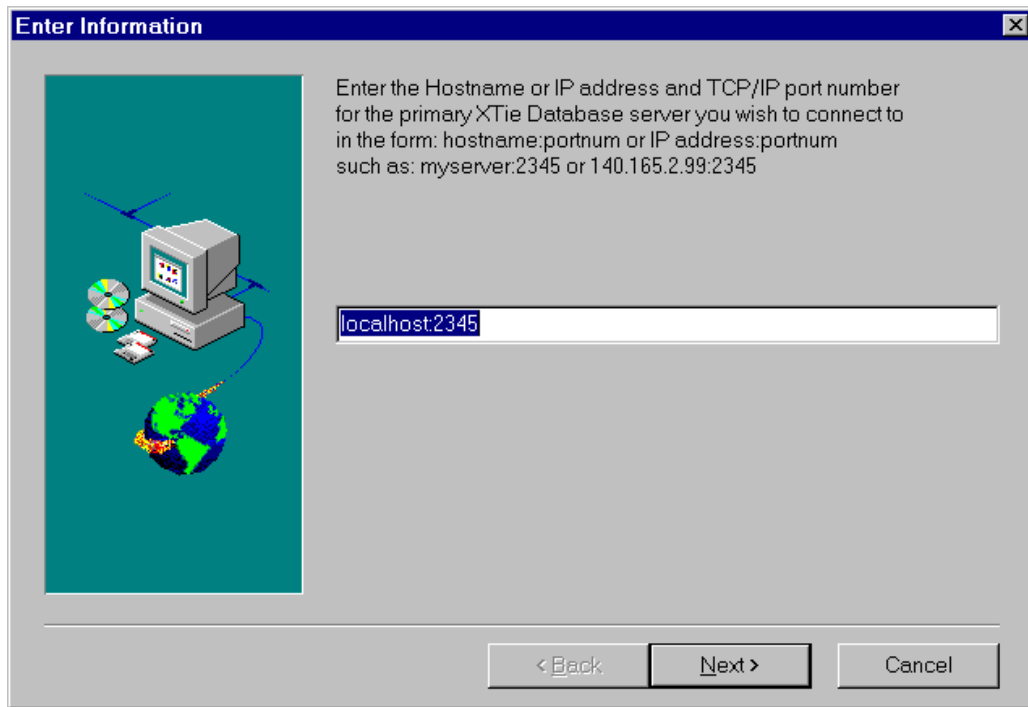


If desired, change the destination directory, then select Next to continue. The following dialog will appear:

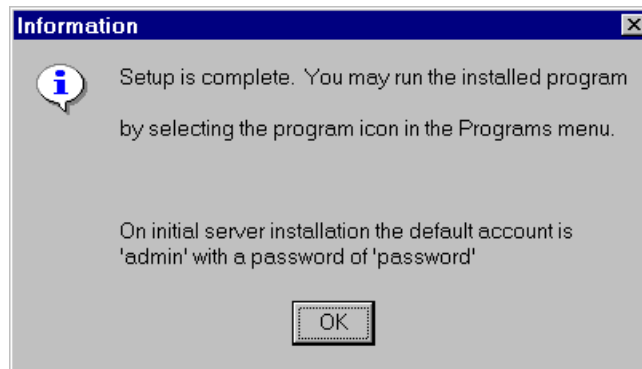


Installation files are copied to the selected destination directory on your hard disk. Insert subsequent installation disks, when prompted, and select OK.

After all the files have been copied the following dialog will appear:



This dialog allows you to specify the hostname or Internet Protocol (IP) address and the Transmission Control Protocol/Internet Protocol (TCP/IP) port number of the XTie DB server. The port number was specified on the previous dialog for the server. The hostname is the server's hostname. The client provides connection capability of up to 10 different XTie server's. Localhost or 127.0.0.1 is the local machine and may be used for the XTie client which is executed on the machine where the XTie DB server was installed. Select Next to continue. The following dialog will appear:



Select OK. XTie installation is complete. Start the XTie server. Start the XTie client. Initial login is "admin" with a password of "password."

# Appendix A

## XTie Server Configuration

XTie Server Configuration is performed during XTie installation or at anytime using the LicenseUtility.exe (not available with DEMO version) located in the Server sub-directory where XTie is installed. This procedure modifies the xtiesvr.ini file located in the Server sub-directory.

### Server Parameters

#### Monitor

The monitor checkbox toggles a monitor server function. This function is mutually exclusive with “Minimize On Launch” and “Run As Service” functions only one or none of these functions may be selected. When monitoring is enabled, the server’s window dynamically displays information internal to the server periodically. This information includes such items as the number of connected users and the amount of server-allocated memory. Basically, this is a debug function. When enabled, a slight decrease in server performance may be noticed depending upon the “Monitor Interval”. If selected, monitor enables the “Monitor Interval” field.

#### Monitor Interval

This field specifies the period in milliseconds that information will be displayed on the server’s window when monitoring is enabled. The default is 900 milliseconds. Intervals less than 900 milliseconds will be quietly reset to 900 milliseconds except for a setting of zero. A setting of zero causes the monitor to update with every incoming message sent to the server. Obviously, a setting of zero could seriously affect server performance.

#### Minimize On Launch

The Minimize On Launch checkbox toggles a server function which minimizes the server window when it is executed. This function is mutually exclusive with “Monitor” and “Run As Service” functions only one or none of these functions may be selected.

#### Run As Service

The Run As Service checkbox toggles a server function which installs/removes the server as a service application. Service applications execute in the background have no window, remain executing after user logout, and are started upon machine boot. On Windows NT , you must be an administrator or power user to install, remove, or manipulate a service. This function is mutually exclusive with “Monitor” and “Minimize On Launch” functions only one or none of these functions may be selected. Upon selecting COMMIT, if the “state” of the XTie DB server has changed, it will be installed/removed as a service application. The status of this operation will appear in the bottom of the dialog window.

#### Network Available

If enabled, a network interface has been detected. It can be unchecked for single machine (stand-alone) operation. When unchecked, the Number Of Users is set to one and

disabled. In order for the installation software to detect your network interface, you must have the IPX protocol bound to the network adapter (usually the default). XTie is strictly TCP/IP networking protocol with this exception. On Windows NT , if this checkbox is unchecked, a single named pipe is used for client-server communication. It is possible on Windows 95 to enable TCP/IP communication on a machine with no network interface or modem. See Appendix C.

### **TCP/IP Port #**

Enter the TCP/IP port number used by the server for communication. Generally, 2345 is a good choice and should not conflict with other applications. If it does, the server will fail to start and the xtiesvr.log file in the “Server” sub-directory will contain the error message. On a stand-alone Windows NT machine with “Network Available” unchecked (using a named pipe), the port number must be zero on both server and client.

## **License Data**

### **Number of Users**

Up to 64 users are supported. This number is of course associated with the License Key you receive. When no network can be detected, the number of users is restricted to one. Changing this number with a good License Key will invalidate the License Key and the XTie DB server will no longer start.

### **License Status**

If smiling, the “LicenseKey” is valid. If frowning, the “LicenseKey” is invalid and the XTie DB server will **NOT** start.

### **Registration Key**

Up to 32 uppercase letters (no numbers) are internally generated by the software and are different for every machine installed. This key is required by XTie, along with the Number of Users to generate the License Key. **No License is necessary for the Demo version of XTie-RT.** Your name, your company’s name, address, phone number, the Registration Key and number of Users are required.

### **License Key**

Enter the License Key you receive from XTie Marketing here. **No License is necessary for the Demo version of XTie-RT.** If the Number of Users, Registration Key, and License Key are valid, the sun will smile.

### **COMMIT**

This button is enabled whenever there is any text in the License Key field. When depressed (the only way to exit this window), the xtiesvr.ini file in the Server sub-directory is updated with the information on the dialog. All controls are disabled and the button changes to Done. Depressing Done exits the window.

### **Help**

This displays the XTieLicense.hlp file.

**NOTE:** if the “admin” account is non-existent in the xtiesvr.ini file, a COMMIT will regenerate the default admin/password entry!

# Appendix B

## xtiesvr.ini file format

Why is an .ini file used instead of the Windows Registry? The XTie server can also be hosted on a UNIX machine (currently Solaris). Registries don't exist there. This file is used for application portability.

### Sections

#### [Options]

Monitor=1 or 0 ; Turn on (1) or off (0) the server monitor  
MonitorPoll=900 ; The period in milliseconds used for monitor update  
MinimizeOnLaunch=0 or 1 ; Minimize server window when executed 0=off, 1=on  
RunAsService=0 or 1 ; Running server as a service process 0=off, 1=on  
; does NOT install it

#### [XTie License]

LicenseKey=JUEMQTWUVYSEOILOAQIERQFU ; The License Key  
RegistrationKey=QZHJVLBJSULNGFMLYKCAECJV ; The Registration Key  
MaxUsers=64 ; The Number of Users  
; (license) that may  
; concurrently connect to  
; the server

#### [Communications]

ServerType=0 ; 0=TCP/IP communications 1=single named pipe (NT only)  
IPPort=2345 ; IP port number, above 1024 or 0 for named pipe (NT only)

#### [users]

user=Admin,WIPMVFP0UWZYPPQHLUSLIELU ; username, encrypted password

#### [Registration]

Client=SKIPSPC:OURNDSQZKBPRAINEBNKSRY ; Automatic client registration

# Appendix C

## Stand-alone Windows 95<sup>®</sup> TCP/IP

This section describes the step-by-step procedure to install and configure TCP/IP on a Windows 95 machine which has neither a modem or an Ethernet adapter. It also assumes no attempt has been made to install networking of any kind.

XTie is a client-server application. It has two applications, a client (the user interface) and a server (the database engine). These applications must communicate with one another using some form of interprocess communication. On the Windows 95 platform, the TCP/IP protocol is used. This presents a problem for users which have no modem or network, but wish to use the XTie application.

Follow this procedure EXACTLY! DO NOT SKIP any steps! DO NOT depress CANCEL on dialog when files are being copied from Microsoft media which may result in a very confused operating system.

1. Double click "My Computer" icon on desktop to open the "My Computer" window.
2. Double click "Control Panel" icon in "My Computer" window. The "Control Panel" window opens.
3. Double click "Network" icon in "Control Panel" window to open the Network dialog window.
4. No networking items should be displayed. Depress the "Add" button to open the Add dialog window.
5. From the list of displayed networking items, select "Adapter," then depress the "Add..." button which opens a dialog window.
6. From the list of items on the left side of the dialog window, select "Microsoft." From the list of items on the right side of the window, select "Dial-Up adapter," then depress the "OK" button.
7. Wait for a moment, then observe the following list of items in the "Network" dialog window:
  - Client for Microsoft Networks
  - Client for Netware Networks
  - Dial-Up Adapter
  - IPX/SPX-compatible Protocol
  - NetBEUI
8. Depress the "Add" button which opens a dialog window.
9. From the list of displayed networking items, select "Protocol," then depress the "Add..." button which opens a dialog window.

10. From the list of items on the left side of the dialog window, select “Microsoft”. From the list of items on the right side of the window, select “TCP/IP,” then depress the “OK” button.
11. Observe that “TCP/IP” has been added to the list of networking items in the “Network” dialog.
12. Depress the “Identification” tab near the top of the “Network” dialog which opens a dialog window.
13. Enter a computer name of your choice in the “Computer name” field. Enter a workgroup name of your choice in the “Workgroup” field. Depress the “OK” button which opens a dialog window.
14. If prompted, insert your Windows 95 installation media. Observe files being copied from the installation media. **DO NOT** depress Cancel button!
15. After all necessary files have been copied from the installation media, a dialog will appear prompting you to restart Windows. Depress “Yes”.
16. After Windows 95 restarts, you will be prompted for a Username and password. Select and enter a Username and password of your choice.
17. To test the success of this procedure, open a MS-DOS prompt by depressing the “Start” button on the taskbar. Select “Programs”. Select “MS-DOS Prompt.” A MS-DOS window will appear. Type **ping localhost**. A response indicating the success of this operation will be displayed.
18. Use “localhost” or “127.0.0.1” as the hostname and “2345” as the “TCP/IP port number” during XTie installation.